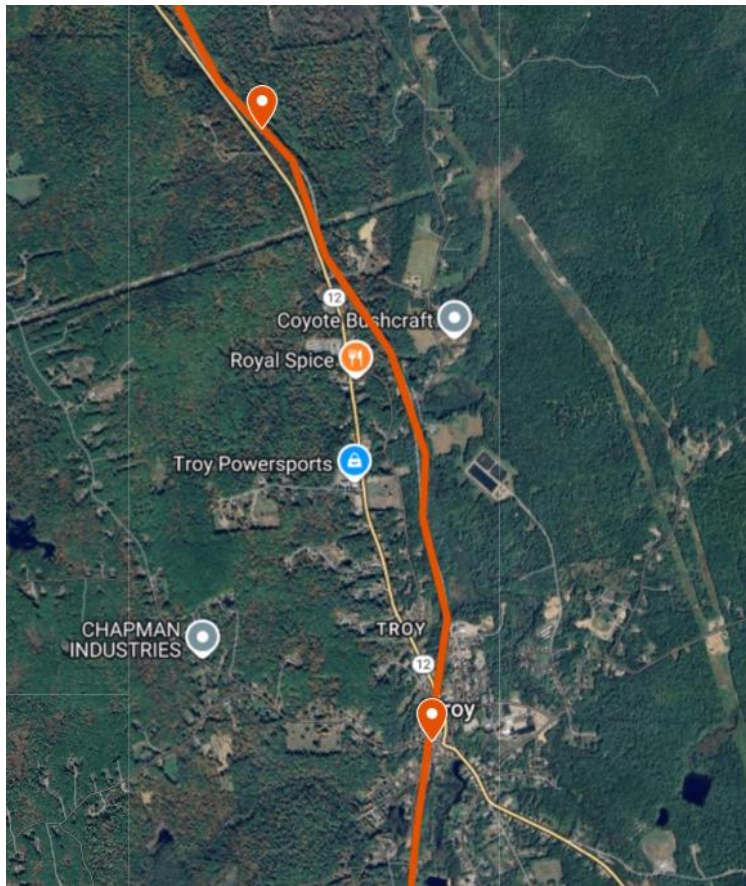


APPENDIX A: PROJECT AND SITE DETAIL



GPS coordinates for work:

GPS 42.85222, -72.19434
(Troy/Marlborough town line)

to

GPS 42.82561, -72.18427
(High St., Troy)

Subcontractor shall rehab the Cheshire Rail Trail section that runs between the Troy/Marlborough town line and High Street, Troy (approximately 2.0 miles; from GPS 42.85222, -72.19434 to GPS 42.82561, -72.18427). Subcontractor shall clear the drainage ditches, make repairs as necessary to ensure all current culverts are functional, and apply hardpack material.

- **Drainage ditches** must be sufficiently deep (1'-2') so that natural organic material (e.g., leaves, sticks, etc.) do not prevent drainage for a minimum of 2 years. Excavated earth material and organic debris shall be disposed of by casting into the wood-line in areas not subject to erosion back into excavated areas.
- **Culverts** should be cleared of any obstructions that prevent drainage. Obstructions may consist of accumulated silt, organic materials, and/or non-organic materials or items.
- **Hardpack material**
 - Shall meet the NHBOT's 304.7 specified material (see: *Appendix B: Surface Material Specification*);
 - Application must be trail width (average trail width 14');
 - Application depth minimum of 4";
 - Application depth must be sufficient to remediate washed out areas and level surface for the purposes of walking and biking;
 - Larger base aggregate may be used to re-establish a stable base with prior approval;
 - Final surface pack must be sufficiently firm enough to support a typical hybrid bike tire with no sinkage.
- **Tree Removal**
 - This project does NOT include the removal of trees or mowing as this work will be completed prior to contract commencement.